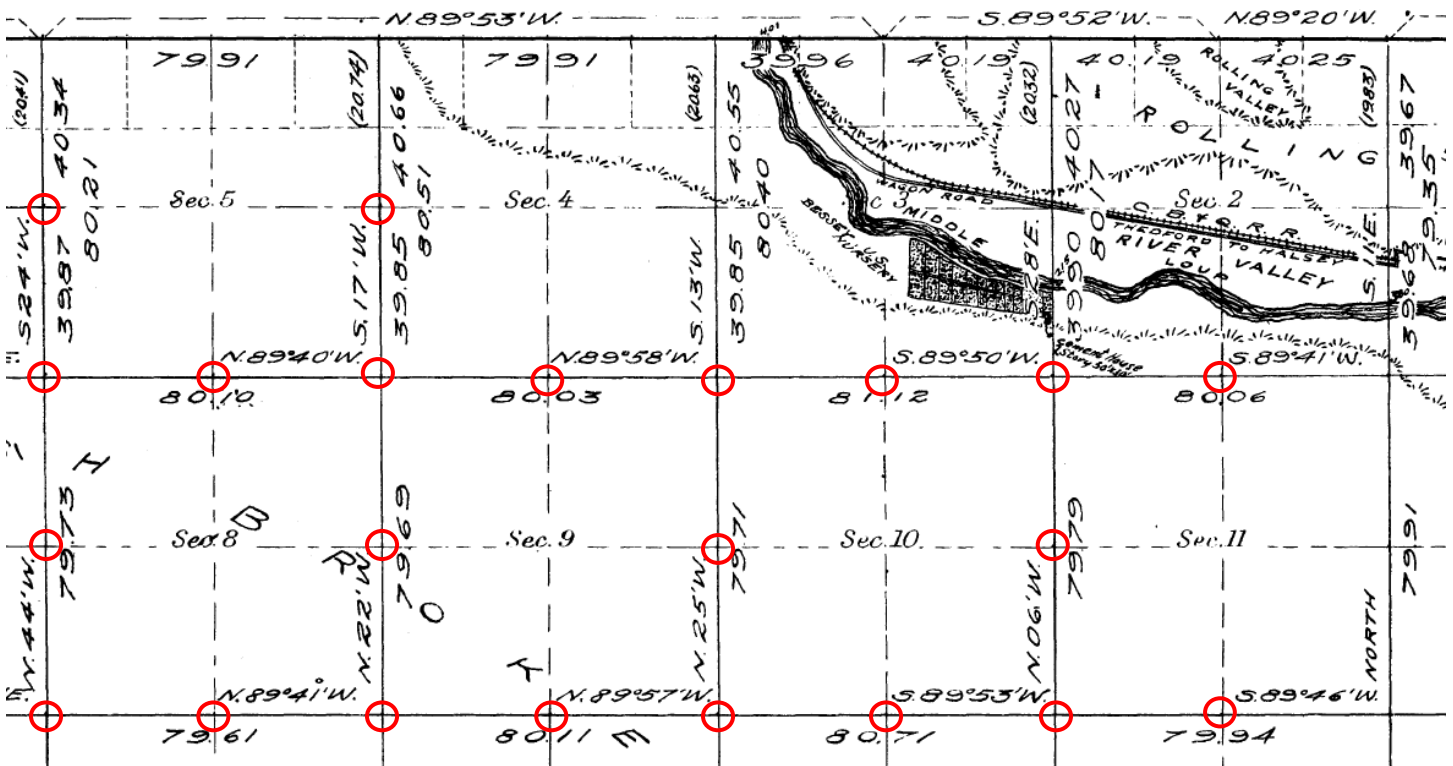


Descriptions for Monuments in Sections 4, 5, 8, 9, 10 and 11. T22N-R26W



From the cor. of secs. 4, 5, 8 and 9, prev. described,
 N. 0° 17' E., bet. secs. 4 and 5.
 Over high broken hills.
 39.85 The proportionate distance, I set an iron post, 3 ft. long,
 Chains.

**E ¼ COR.
SEC. 5**

1 in. dia., two feet in the ground in cement base,
 8x8x6 ins., for the reestablished 1/4 sec. cor., and
 mark on top of brass cap,
 S 4 on E., and
 S 5 1/4 on W., half of cap; dig pits, 20x20x15
 ins., N. & S. of post, 7 ft. dist.; and raise a mound
 of earth, 4 ft. base, 2 ft. high, around cor.

From the cor. of secs. 5, 6, 7 and 8, prev. described,
 N. 0° 24' E., bet. secs. 5 and 6.
 Over high broken hills.
 39.87 The proportionate distance, I set an iron post, 3 ft. long,
 1 in. dia., two feet in the ground in cement base,
 8x8x6 ins., for the reestablished 1/4 sec. cor., and
 mark on top of brass cap,
 S 5 on E., and
 S 6 1/4 on W., half of cap; dig pits, 20x20x15
 ins., N. & S. of post, 7 ft. dist.; and raise a mound
 of earth, 4 ft. base, 2 ft. high, around cor.

**W ¼ COR.
SEC. 5**

79.73 The proportionate distance, I set an iron post, 3 ft. long, 2 ins. dia., two feet in the ground in cement base, 8x8x6 ins., for the reestablished cor. of secs. 7, 8, 17 and 18, and mark on top of brass cap,
R 26 W S 8 in NE.,
S 17 in SE.,
S 18 in SW., and
T 22 N S 7 in NW., quadrant of cap; dig pits, 20x20x15 ins., in each sec., 7 ft. dist.; and raise a mound of earth, 6 ft. base, 2 ft. high, around cor.
Land, high broken hills.
Soil, sandy; 4th rate.
No timber.

**SW COR.
SEC. 8**

From this sec. cor.,
S. 89°41' E., bet. secs. 8 and 17.
Over high broken hills.

39.80 The proportionate distance, I set an iron post, 3 ft. long, 1 in. dia., two feet in the ground in cement base, 8x8x6 ins., for the reestablished 1/4 sec. cor., and mark on top of brass cap,
S 8 1/4 on N., and
S 17 on S., half of cap; dig pits, 20x20x15 ins., E. & W. of post, 7 ft. dist.; and raise a mound of earth, 4 ft. base, 2 ft. high, around cor.

**S 1/4 COR.
SEC. 8**

79.69 The proportionate distance, I set an iron post, 3 ft. long, 2 ins. dia., two feet in the ground in cement base, 8x8x6 ins., for the reestablished cor. of secs. 8, 9, 16 and 17, and mark on top of brass cap,
R 26 W S 9 in NE.,
S 16 in SE.,
S 17 in SW., and
T 22 N S 8 in NW., quadrant of cap; dig pits, 20x20x15 ins., in each sec., 7 ft. dist.; and raise a mound of earth, 6 ft. base, 2 ft. high, around cor.

**SE COR.
SEC. 8**

From the cor. of secs. 8, 9, 16 and 17, prev. described,
N. 0°22' W., bet. secs. 8 and 9.
Over high broken hills.

39.84 The proportionate distance, I set an iron post, 3 ft. long, 1 in. dia., two feet in the ground in cement base, 8x8x6 ins., for the reestablished 1/4 sec. cor., and mark on top of brass cap,
S 9 on E., and
S 8 1/4 on W., half of cap; dig pits, 20x20x15 ins., N. & S. of post, 7 ft. dist.; and raise a mound of earth, 4 ft. base, 2 ft. high, around cor.
Thence I continue bet. secs. 8 and 9.

**E 1/4 COR.
SEC. 8**

79.69 The proportionate distance, I set an iron post, 3 ft. long, 2 ins. dia., two feet in the ground in cement base, 8x8x6 ins., for the reestablished cor. of secs. 4, 5, 8 and 9, and mark on top of brass cap,
R 26 W S 4 in NE.,
S 9 in SE.,
S 8 in SW., and
T 22 N S 5 in NW., quadrant of cap; dig pits, 20x20x15 ins., in each sec., 7 ft. dist.; and raise a mound of earth, 6 ft. base, 2 ft. high, around cor.
Land, high broken hills.
Soil, sandy; 4th rate.
No timber.

**NE COR.
SEC. 8**

From the cor. of secs. 7, 8, 17 and 18, prev.
described.

N. 0°44' W., bet. secs. 7 and 8.
Over high broken hills.

39.86 The proportionate distance, I set an iron post, 3 ft. long,
1 in. dia., two feet in the ground in cement base,
8x8x6 ins., for the reestablished 1/4 sec. cor., and
mark on top of brass cap,
S 8 on E., and
S 7 1/4 on W., half of cap; dig pits, 20x20x15
ins., N. & S. of post, 7 ft. dist.; and raise a mound

W 1/4 COR.
SEC. 8

Chains.

of earth, 4 ft. base, 2 ft. high, around cor.
Thence I continue bet. secs. 7 and 8.

79.73 The proportionate distance, I set an iron post, 3 ft. long,
2 ins. dia., two feet in the ground in cement base,
8x8x6 ins., for the reestablished cor. of secs. 5, 6,
7 and 8, and mark on top of brass cap,
R 26 W S 5 in NE.,
S 8 in SE.,
S 7 in SW., and
T 22 N S 6 in NW., quadrant of cap; dig pits,
20x20x15 ins., in each sec., 7 ft. dist.; and raise a
mound of earth, 6 ft. base, 2 ft. high, around cor.
Land, high broken hills.
Soil, sandy; 4th rate.
No timber.

NW COR.
SEC. 8

From this sec. cor.,
S. 89°40' E., bet. secs. 5 and 8.

Over high broken hills.

40.05 The proportionate distance, I set an iron post, 3 ft. long,
1 in. dia., two feet in the ground in cement base,
8x8x6 ins., for the reestablished 1/4 sec. cor., and
mark on top of brass cap,
S 5 1/4 on N., and
S 8 on S., half of cap; dig pits, 20x20x15 ins.,
E. & W. of post, 7 ft. dist.; and raise a mound of
earth, 4 ft. base, 2 ft. high, around cor.

N 1/4 COR.
SEC. 8

From this sec. cor.,
S. 89°57' E., bet. secs. 9 and 16.

Over high broken hills.

40.05 The proportionate distance, I set an iron post, 3 ft. long,
1 in. dia., two feet in the ground in cement base,
8x8x6 ins., for the reestablished 1/4 sec. cor., and
mark on top of brass cap,
S 9 1/4 on N., and
S 16 on S., half of cap; dig pits, 20x20x15 ins.,
E. & W. of post, 7 ft. dist.; and raise a mound of
earth, 4 ft. base, 2 ft. high, around cor.
Thence I continue bet. secs. 9 and 16.

S 1/4 COR.
SEC. 9

80.11 Intersect the reestablished cor. of secs. 9, 10, 15 and 16,
prev. described.
Land, high broken hills.
Soil, sandy; 4th rate.
No timber.

79.71 The proportionate distance, I set an iron post, 3 ft. long, 2 ins. dia., two feet in the ground in cement base, 8x8x6 ins., for the reestablished cor. of secs. 9, 10, 15 and 16, and mark on top of brass cap,
R 26 W S 10 in NE.,
S 15 in SE.,
S 16 in SW., and
T 22 N S 9 in NW., quadrant of cap; dig pits, 20x20x15 ins., in each sec., 7 ft. dist.; and raise a mound of earth, 6 ft. base, 2 ft. high, around cor.
Land, high broken hills.
Soil, sandy; 4th rate.
No timber.

SE COR.
SEC. 9

40.01 The proportionate distance, I set an iron post, 3 ft. long, 1 in. dia., two feet in the ground in cement base, 8x8x6 ins., for the reestablished 1/4 sec. cor., and mark on top of brass cap,
S 4 1/4 on N., and
S 9 on S., half of cap; dig pits, 20x20x15 ins., E. & W. of post, 7 ft. dist.; and raise a mound of earth, 4 ft. base, 2 ft. high, around cor.

N 1/4 COR.
SEC. 9

39.85 The proportionate distance, I set an iron post, 3 ft. long, 1 in. dia., two feet in the ground in cement base, 8x8x6 ins., for the reestablished 1/4 sec. cor., and mark on top of brass cap,
S 10 on E., and
S 9 1/4 on W., half of cap; dig pits, 20x20x15

E 1/4 COR.
SEC. 9

ins., N. & S. of post, 7 ft. dist.; and raise a mound of earth, 4 ft. base, 2 ft. high, around cor.

Thence I continue bet. secs. 9 and 10.

79.71 The proportionate distance, I set an iron post, 3 ft. long, 2 ins. dia., two feet in the ground in cement base, 8x8x6 ins., for the reestablished cor. of secs. 3, 4, 9 and 10, and mark on top of brass cap,
R 26 W S 3 in NE.,
S 10 in SE.,
S 9 in SW., and
T 22 N S 4 in NW., quadrant of cap; dig pits, 20x20x15 ins., in each sec., 7 ft. dist.; and raise a mound of earth, 6 ft. base, 2 ft. high, around cor.
Land, high broken hills.
Soil, sandy; 4th rate.
No timber.

NE COR.
SEC. 9

40.56 The proportionate distance, I set an iron post, 3 ft. long, 1 in. dia., two feet in the ground in cement base, 8x8x6 ins., for the reestablished 1/4 sec. cor., and mark on top of brass cap,
S 3 1/4 on N., and
S 10 on S., half of cap; dig pits, 20x20x15 ins., E. & W. of post, 7 ft. dist.; and raise a mound of earth, 4 ft. base, 2 ft. high, around cor.

N 1/4 COR.
SEC. 10

40.35 The proportionate distance, I set an iron post, 3 ft. long, 1 in. dia., two feet in the ground in cement base, 8x8x6 ins., for the reestablished 1/4 sec. cor., and mark on top of brass cap,
S 10 1/4 on N., and
S 15 on S., half of cap; dig pits, 20x20x15 ins., E. & W. of post, 7 ft. dist.; and raise a mound of earth, 4 ft. base, 2 ft. high, around cor.

S 1/4 COR.
SEC. 10

79.79 The proportionate distance, I set an iron post, 3 ft. long, 2 ins. dia., two feet in the ground in cement base, 8x8x6 ins., for the reestablished cor. of secs. 10, 11, 14 and 15, and mark on top of brass cap,
R 26 W S 11 in NE.,
S 14 in SE.,
S 15 in SW., and
T 22 N S 10 in NW., quadrant of cap; dig pits, 20x20x15 ins., in each sec., 7 ft. dist.; and raise a

SE COR.
SEC. 10

mound of earth, 6 ft. base, 2 ft. high, around cor.
Land, high broken hills.
Soil/ sandy; 4th rate.
No timber.

From the cor. of secs. 10, 11, 14 and 15, prev. described,
N. 0° 6' W., bet. secs. 10 and 11.
Over high broken hills.

39.89 The proportionate distance, I set an iron post, 3 ft. long, 1 in. dia., two feet in the ground in cement base, 8x8x6 ins., for the reestablished 1/4 sec. cor., and mark on top of brass cap,
S 11 on E., and
S 10 1/4 on W., half of cap; dig pits, 20x20x15 ins., N. & S. of post, 7 ft. dist.; and raise a mound of earth, 4 ft. base, 2 ft. high, around cor.
Thence I continue bet. secs. 10 and 11.

E 1/4 COR.
SEC. 10

79.79 The proportionate distance, I set an iron post, 3 ft. long, 2 ins. dia., two feet in the ground in cement base, 8x8x6 ins., for the reestablished cor. of secs. 2, 3, 10 and 11, and mark on top of brass cap,
R 26 W S 2 in NE.,
S 11 in SE.,
S 10 in SW., and
T 22 N S 3 in NW., quadrant of cap; dig pits, 20x20x15 ins., in each sec., 7 ft. dist.; and raise a mound of earth, 6 ft. base, 2 ft. high, around cor.
Land, high broken hills.
Soil, sandy; 4th rate.
No timber.

NE COR.
SEC. 10

39.97 The proportionate distance, I set an iron post, 3 ft long, 1 in. dia., two feet in the ground in cement base, 8x8x6 ins., for the reestablished 1/4 sec. cor., and mark on top of brass cap,
S 11 1/4 on N., and
S 14 on S., half of cap; dig pits, 20x20x15 ins., E. & W. of post, 7 ft. dist.; and raise a mound of earth, 4 ft. base, 2 ft. high, around cor.

S 1/4 COR.
SEC. 11

40.03 The proportionate distance, I set an iron post, 3 ft. long,
1 in. dia., two feet in the ground in cement base,
8x8x6 ins., for the reestablished 1/4 sec. cor., and
mark on top of brass cap.
S 2 1/4 on N., and
S 11 on S., half of cap; dig pits, 20x20x15 ins.
E. & W. of post, 7 ft. dist.; and raise a mound of
earth, 4 ft. base, 2 ft. high, around cor.

N ¼ COR.
SEC. 11