

# U. S. GEOLOGICAL SURVEY MONUMENTS

In 1946, the U. S. Geological Survey established 2 triangulation stations known as “Strunk” and “Green” and 10 bench marks within the boundary of the National Forest at Halsey. Each monument is an aluminum disk in a square concrete pad. The positions were determined with a handheld GPS receiver. Those positions marked with +/- have not been recovered.

## Triangulation Stations:

Strunk - 41°50'20.4" 100°28'30.8"

Green - 41°49'55.2" 100°19'04.3"

## Bench Marks:

52 S - 41°53'45.4" 100°19'44.1"

53 S - 41°53'48.1" 100°22'03.7"

54 S - 41°52'19.0" 100°22'01.3"

55 S - 41°51'23.0" 100°22'55.0"

56 S - 41°49'36.2" 100°22'50.9"


57 S - 41°47'51.6" 100°22'54.2"


59 S - 41°53'03.0" 100°15'55.1" +/-

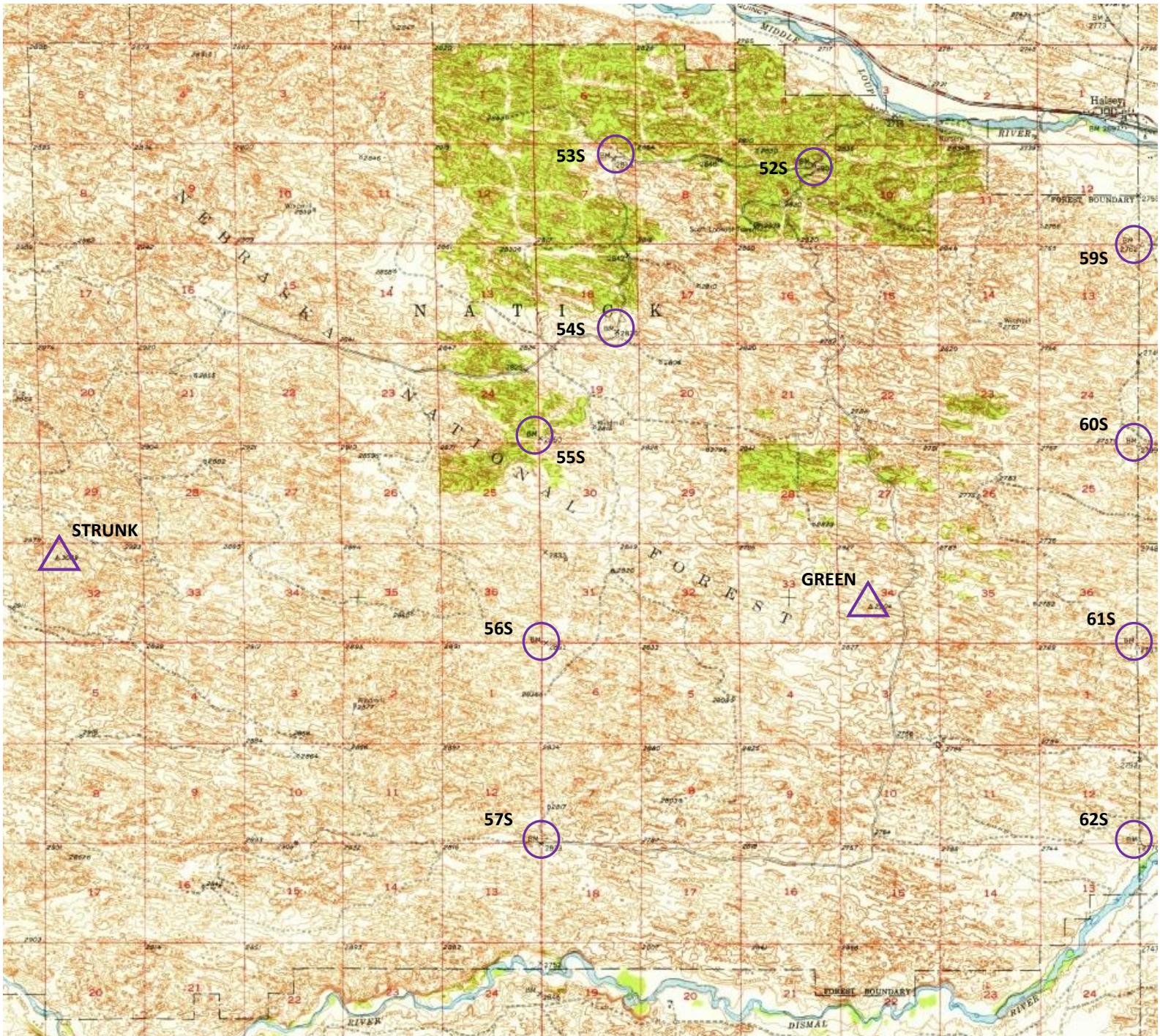
60 S - 41°51'19.6" 100°15'58.5" +/-

61 S - 41°49'33.9" 100°15'59.3"

62 S - 41°47'52.4" 100°15'56.9" +/-

 = Bench Mark

 = Triangulation Station



## Bench Mark Descriptions

<p>Halsey, 3.2 mi. W. and 0.5 mi. S. from, NE¼ sec. 9, T. 22 N., R. 26 W., 36 ft. N. and 32 ft. W. from rds. to Thedford and Scott's fire tower, in concrete post; standard tablet stamped "52 S 1946"</p>	<p>2801.710</p>	<p>Halsey, 7.5 mi. S. and 6.0 mi. W. from, cor. secs. 7, 12, 13 and 18, T. 21 N., Rs. 26 and 27 W., 60 ft. S. of G.L.O. marker, 78 ft. S. of rd., 3 ft. N. of fence, in concrete post; standard tablet stamped "57 S 1946"</p>	<p>2822.738</p>
<p>Halsey, 5.0 mi. W. and 0.5 mi. S. from, NE¼ sec. 7, T. 22 N., R. 26 W., at angle in rd. E.-S., 270 ft. S. and 2 ft. E. of fence corner, 58 ft. W. of rd., in concrete post; standard tablet stamped "53 S 1946"</p>	<p>2812.903</p>	<p>Halsey, 1.5 mi. S. of, cor. secs. 7, 12, 13 and 18, T. 22 N., Rs. 25 and 26 W., 200 ft. E. and 2 ft. N. of G.L.O. marker at fence corner, in concrete post; standard tablet stamped "59 S 1946"</p>	<p>2762.071</p>
<p>Halsey, 5.0 mi. W. and 2.5 mi. S. from, SW¼ sec. 18, T. 22 N., R. 26 W., 206 ft. N. and 30 ft. W. of junction of dim rd. SE., 168 ft. N. and 2 ft. E. of angle in fence N. and SW., in concrete post; standard tablet stamped "54 S 1946"</p>	<p>2819.928</p>	<p>Halsey, 3.5 mi. S. of, cor. secs. 19, 24, 25 and 30, T. 22 N., Rs. 25 and 26 W., 12 ft. N. and 30 ft. E. of G.L.O. marker, 66 ft. E. of fence, in concrete post; standard tablet stamped "60 S 1946"</p>	<p>2798.794</p>
<p>Halsey, 6.0 mi. W. and 3.5 mi. S. from, near cor. secs. 19, 24, 25 and 30, T. 22 N., Rs. 26 and 27 W., 30 ft. E. of E. lane of fire break, 30 ft. S. and 3 ft. E. of angle in fence S.-E., in concrete post; standard tablet stamped "55 S 1946"</p>	<p>2850.480</p>	<p>Halsey, 5.5 mi. S. of, cor. secs. 1, 6, 31 and 36, Tps. 21 and 22 N., Rs. 25 and 26 W., 204 ft. S. and 2 ft. E. of crossfence, in concrete post; standard tablet stamped "61 S 1946"</p>	<p>2782.682</p>
<p>Halsey, 5.5 mi. S. and 6.0 mi. W. from, cor. secs. 1, 6, 31 and 36, Tps. 21 and 22 N., Rs. 26 and 27 W., 105 ft. W. and 2 ft. S. of corner of T-fence N., in concrete post; standard tablet stamped "56 S 1946"</p>	<p>2850.763</p>	<p>Halsey, 7.5 mi. S. of, cor. secs. 7, 12, 13 and 18, T. 21 N., Rs. 25 and 26 W., 20 ft. N. of fence W., 2 ft. E. of fence N., in concrete post; standard tablet stamped "62 S 1946"</p>	<p>2776.169</p>

Elevations are NGVD 1929 Datum