

CERTIFIED LAND CORNER RECORD

County of Lawrence, State of South Dakota

Section 1, Township 2 North, Range 4 East, Meridian Black Hills

CERTIFICATION:

I hereby certify that on the 19 day of July, 2015, that I

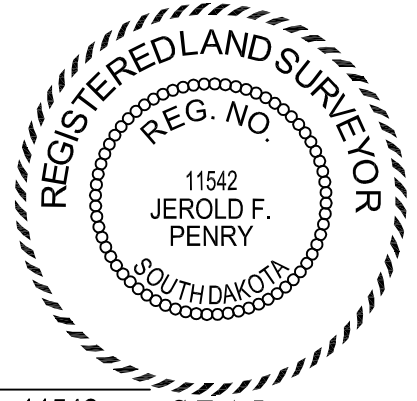
did find/establish the NE Corner of Section 1

which was evidence by the lower portion of a 3.5" dia. iron pipe with flared bottom and one-half of a 3.75" dia. U.S.G.S. bronze cap which were apparently damaged by logging operations on an unknown date. This monument agrees with the one established by U. S. Surveyor A. L. Coleman of the U. S. Geological Survey on Nov. 13, 1897, as stated in his Instructions dated July 23, 1897. Also, a dead 18" dia. bearing tree was found to the southwest with correct markings "T2N R4E S1 BT" scribed on a piece of wood lying beside the tree on the ground. Coleman's measurement to this tree was 19.1'. Current measurement is 18.3'.

I further certify that to perpetuate the location of said corner I did, at the exact location thereof, place a permanent monument consisting of using the bottom 12" of the found USGS iron pipe with flared bottom, filling it with concrete and placing a 1.25" dia. stamped flat brass marker in the center for the lower monument 1.5' deep. Then placed a 2.25" dia. x 30" long concrete filled aluminum pipe with flared bottom and with a 3.25" dia. stamped aluminum cap for the surface monument. Inside the concrete filled pipe is a 0.5" x 24" reinforcing bar. Round 0.75" dia. magnets were placed below the lower monument and under the cap on the surface monument. A rock mound, 3' dia. and 1.5' tall was placed south of the corner monument.

I further certify that I did establish the following references

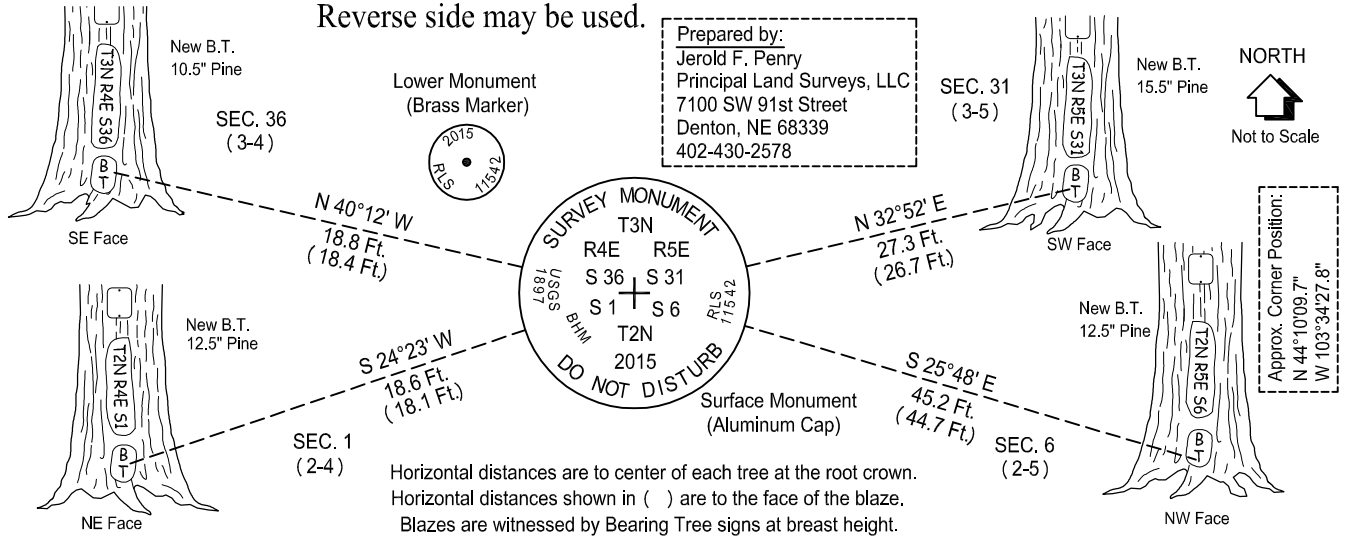
1. Blaze on a 15.5" pine tree N 32°52' E a distance of 27.3 feet to the center at the root crown.
2. Blaze on a 12.5" pine tree S 25°48' E a distance of 45.2 feet to the center at the root crown.
3. Blaze on a 12.5" pine tree S 24°23' W a distance of 18.6 feet to the center at the root crown.
4. Blaze on a 10.5" pine tree N 40°12' W a distance of 18.8 feet to the center at the root crown.
5. Rock mound 3' diameter and 1.5' tall, south of monument. 1.5' to the center of the mound.



Date July 24, 2015

Jerold F. Penry
Registered Land Surveyor No. 11542 SEAL

SKETCH: Show course and distance to adjacent corners if determined in this survey. Reverse side may be used.



SECTION 1 DIAGRAM
(To be completed by Surveyor)

| | | | |
|--|--|--|--|
| | | | |
| | | | |
| | | | |
| | | | |

LEGEND:
● Corner Location

OFFICE OF REGISTER OF DEEDS

County of _____
State of South Dakota
Filed for the record this _____ day of _____, 20____
in Corner Record Book No. _____ Page _____ and
noted on the following cross-index plats:

Cross Index No. _____, T _____, R _____, Mer. _____
_____, T _____, R _____, Mer. _____
_____, T _____, R _____, Mer. _____
_____, T _____, R _____, Mer. _____

Register of Deeds: _____ by _____